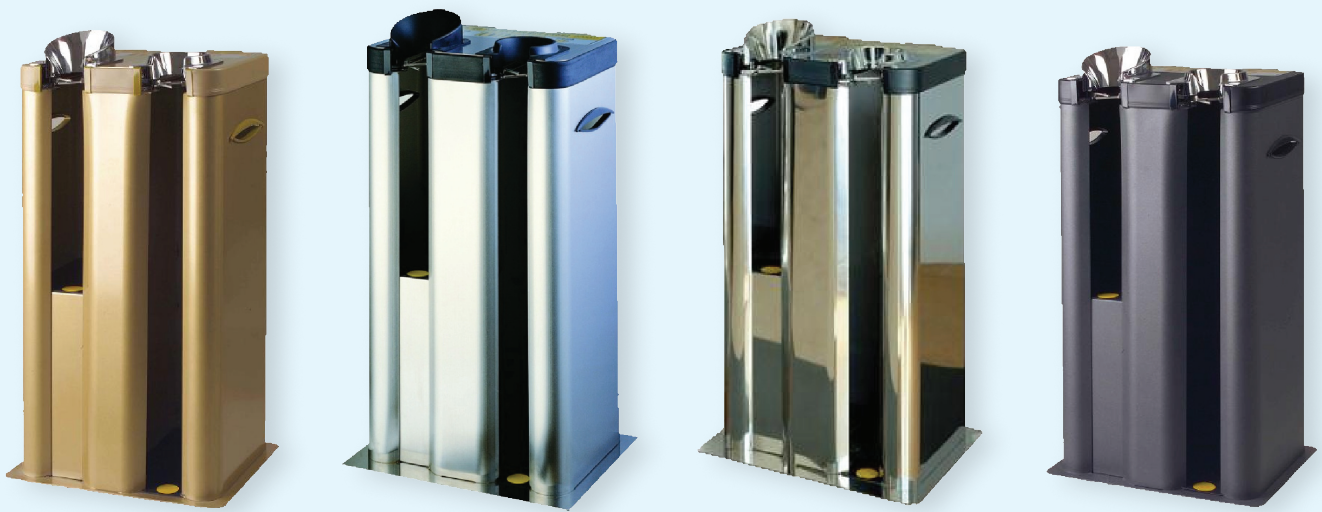


# Reduce Your OH&S Risk & Liability

## Dual Umbrella Bagging Station

**A must in your lobby entry!**

The new dual shute station is designed to handle BOTH small & large umbrellas. Extra large loading capacity of: 2000 uses per load



### ASSESS THE BENEFITS

Less Water on Floors = Less Risk Hazard

- Quickly & Conveniently bags wet umbrellas
- Reduces slippery floor conditions during wet periods
- Reduces potential damage to carpets, fixtures & fittings
- Reduces floor maintenance during wet periods
- Increases customer satisfaction by solving the "wet umbrella problem"
- Potentially reduces liability claims arising from slips & falls due to wet floors

**The Umbrella Station is an economical solution to a major OH&S problem during wet periods.**

From as little as: \$2.50 per day  
"fully serviced and maintained all year around"

OR

"purchase it outright for self servicing if desired"

# The Service Program

Our Umbrella Station comes with a comprehensive built in service program, designed to alleviate worries & hassles of maintaining the station at maximum performance.



## Our Fully Service System Includes:

- Supply & installation of the umbrella station
- 4 services per annum with up to 2000 polybag fill per service
- Comprehensive detail maintenance on each service
- Supply & replenishment of up to 8000 polybags per annum
- Full warranty on the station for the duration of the agreement

With our service program, you our customer will receive the full benefit of our umbrella station without the headache of ensuring it is properly stocked and maintained. We look after it all and ensure you have a trouble free solution to a problem.

## HOW DOES IT WORK

The umbrella station is a non electric mobile machine that is positioned at the entrance of any commercial building with the aim to prevent customers and staff entering the building dripping water from their wet umbrellas as they enter during rainy days.

By reducing water droplets falling and being draped into the lobby, lifts and other parts of the building, you would be contributing to a safer public environment and potentially saving someone from harm & injury.

When people with wet umbrellas enter your premises, they would be encouraged to use the UMBRELLA STATION by inserting their wet umbrella into one of the two shutes catering for small or large umbrellas. Once inserted, a waterproof polybag is automatically inserted onto the umbrella preventing water from dripping on to the floor as shown.



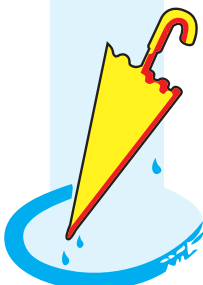
01. Put wet umbrella straight into the shute



02. the umbrella is automatically wrapped in a waterproof polybag



03. Pull umbrella toward front slowly



A VISIONARY SOLUTION  
TO A BASIC PROBLEM

[www.slipless.com.au](http://www.slipless.com.au)

Slip-Less Services Pty Ltd

Service No: 1300 062 672

Head Office Phone: 02 9584 8200

Facsimile: 02 9584 0933

Email: [info@slipless.com.au](mailto:info@slipless.com.au)